



Bajkul Milani Mahavidyalaya

[Govt. Sponsored]

Estd.- 1964

P.O. : Kismat Bajkul ● Dist. : Purba Medinipur ● Pin Code No.- 721655

Fax : 03220-274-291, Web : www.bajkulcollege.org

E-mail : bajkul_college@rediffmail.com

Student Centric Method

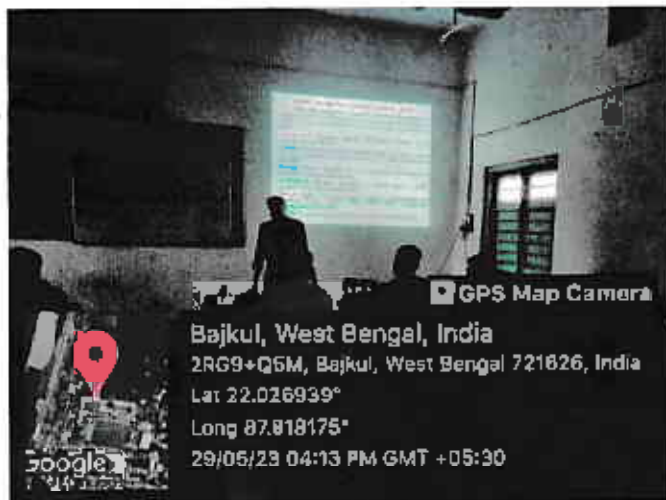
College undertakes various policies and initiative to give supports to students to build their learning ability, to develop their skill and personality, to develop their power of expression. Major percentage of the students is from remote rural areas and belongs to poor financial back ground. There are students who need remedial classes. There are students who need books. There are students who need financial support. There are students who are first learner.

Advance students need advance learning. Beside these the CBCS system have been implemented which need quite advance teaching learning methods to complete the syllabus in due time.

Keeping in mind all the above things college, IQAC and Departments provides the following student centric methods

1. Smart class room or ICT Facilities

At present there are 10 (ten) smart class rooms in our college. These class rooms are decorated with facilities of power point presentation and internet connections. Teachers use the rooms as per routine. Students of all disciplines can take the facility of smart class rooms.



ICT Classroom of department of Geography

ATTESTED

[Signature]
22/08/2023
Teacher-in-charge
Bajkul Milani Mahavidyalaya
P.O.- Kismat Bajkul
Dist.- Purba Medinipur

Principal : (03220) 274-291

Office : (03220) 274-460



Bajkul Milani Mahavidyalaya

[Govt. Sponsored]

Estd.- 1964

P.O. : Kismat Bajkul ● Dist. : Purba Medinipur ● Pin Code No.- 721655

Fax : 03220-274-291, Web : www.bajkulcollege.org

E-mail : bajkul_college@rediffmail.com



ICT Classroom of department of Computer Science



ICT Classroom of department of Botany

ATTESTED

[Signature]
22/08/23
Teacher-in-charge
Bajkul Milani Mahavidyalaya
P.O.- Kismat Bajkul
Dist.- Purba Medinipur

Bajkul Milani Mahavidyalaya

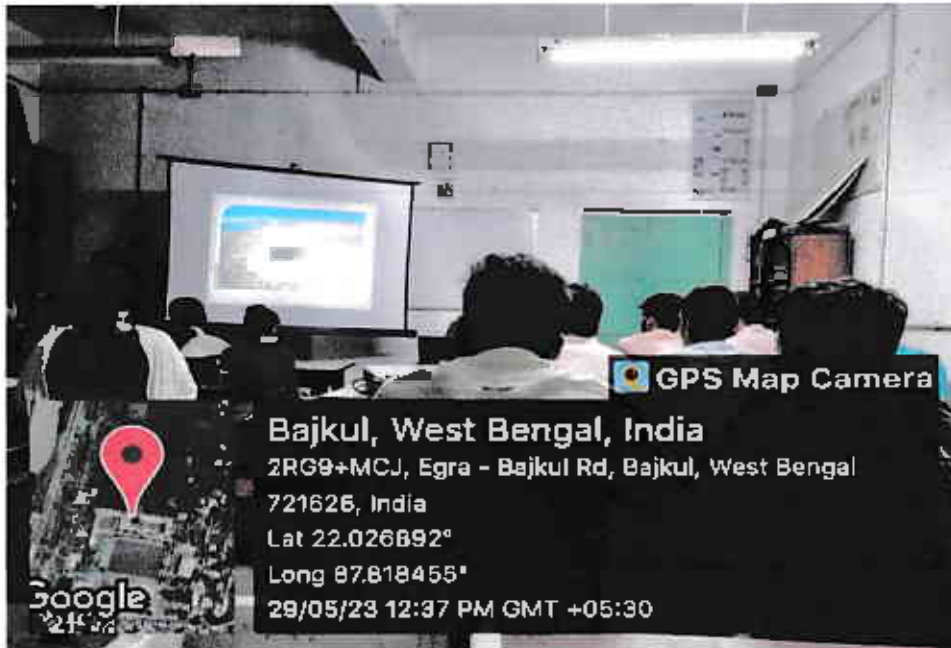
[Govt. Sponsored]

Estd.- 1964

P.O. : Kismat Bajkul ● Dist. : Purba Medinipur ● Pin Code No.- 721655

Fax : 03220-274-291, Web : www.bajkulcollege.org

E-mail : bajkul_college@rediffmail.com



ICT Classroom of department of Zoology

2. Class room seminars

Class room seminars are organized by the departments as per availability of their available time gap in routine. Obviously they practice it without hampering scheduled classes. Students are asked by the departmental teachers to choose the topic of presentation. Students present their seminar talk in presence of departmental teachers and students. This student centric method is adopted to help the student in developing their ability of expression and it also make their understanding better.



Classroom seminar of department of Geography

ATTESTED

M. S. Ghosh
22/08/23
Teacher-in-charge
Bajkul Milani Mahavidyalaya
P.O.- Kismat Bajkul
Dist.- Purba Medinipur

Principal : (03220) 274-291

Office : (03220) 274-460

Bajkul Milani Mahavidyalaya

[Govt. Sponsored]

Estd.- 1964

P.O. : Kismat Bajkul ● Dist. : Purba Medinipur ● Pin Code No.- 721655

Fax : 03220-274-291, Web : www.bajkulcollege.org

E-mail : bajkul_college@rediffmail.com



Classroom seminar of department of Computer Science

3. Departmental Laboratory

Each laboratory based department has well equipped laboratory facility. Power supply is always available (during load-shading alternate DG power supply is available). Students can use the laboratory as per scheduled time on regular basis.



Practical laboratory of department of Nutrition

ATTESTED

M. S. Ghosh
22/08/2013
Teacher-in-charge
Bajkul Milani Mahavidyalaya
P.O.- Kismat Bajkul
Dist.- Purba Medinipur

Principal : (03220) 274-291

Office : (03220) 274-460



Bajkul Milani Mahavidyalaya

[Govt. Sponsored]

Estd. - 1964

P.O. : Kismat Bajkul ● Dist. : Purba Medinipur ● Pin Code No.- 721655

Fax : 03220-274-291, Web : www.bajkulcollege.org

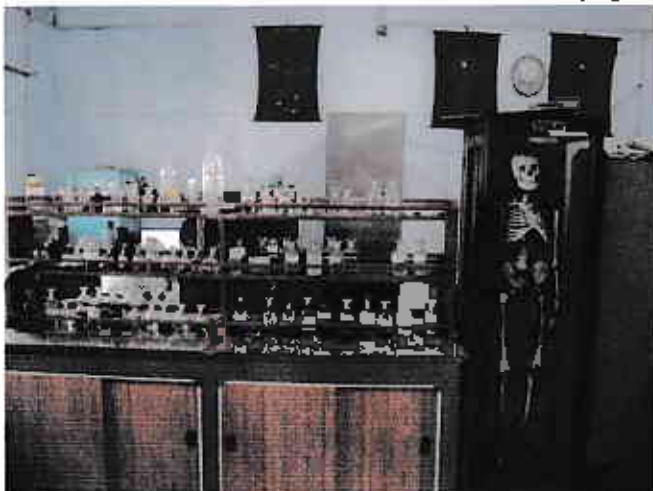
E-mail : bajkul_college@rediffmail.com



Practical laboratory of department of Chemistry



Practical laboratory of department of Automobile



Practical laboratory of department of Physiology & Physics

ATTESTED
[Signature]
22/08/2023
Teacher-in-charge
Bajkul Milani Mahavidyalaya
P.O.- Kismat Bajkul
Dist.- Purba Medinipur



Bajkul Milani Mahavidyalaya

[Govt. Sponsored]

Estd.- 1964

P.O. : Kismat Bajkul ● Dist. : Purba Medinipur ● Pin Code No.- 721655

Fax : 03220-274-291, Web : www.bajkulcollege.org

E-mail : bajkul_college@rediffmail.com

Principal : (03220) 274-291

Office : (03220) 274-460

4. Departmental library

All the departments have separate departmental libraries rich of books which are in accordance with their syllabus requirement. Students regularly use the books for study purpose.



Departmental library of Bengali



Departmental library of Zoology

ATTESTED
[Signature]
22/08/23
Teacher-in-charge
Bajkul Milani Mahavidyalaya
P.O.- Kismat Bajkul
Dist.- Purba Medinipur



Bajkul Milani Mahavidyalaya

[Govt. Sponsored]

Estd. - 1964

P.O. : Kismat Bajkul ● Dist. : Purba Medinipur ● Pin Code No. - 721655

Fax : 03220-274-291, Web : www.bajkulcollege.org

E-mail : bajkul_college@rediffmail.com

4. Departmental library

All the departments have separate departmental libraries rich of books which are in accordance with their syllabus requirement. Students regularly use the books for study purpose.



Departmental library of Bengali



Departmental library of Zoology

ATTESTED
(Signature)
 22/08/23
 Teacher-in-charge
 Bajkul Milani Mahavidyalaya
 P.O.- Kismat Bajkul
 Dist.- Purba Medinipur

Principal : (03220) 274-291

Office : (03220) 274-460



Bajkul Milani Mahavidyalaya

[Govt. Sponsored]

Estd.- 1964

P.O. : Kismat Bajkul ● Dist. : Purba Medinipur ● Pin Code No.- 721655

Fax : 03220-274-291, Web : www.bajkulcollege.org

E-mail : bajkul_college@rediffmail.com



Departmental library of History



Departmental library of Geography

ATTESTED
[Signature]
22/08/2023
Teacher-in-charge
Bajkul Milani Mahavidyalaya
P.O.- Kismat Bajkul
Dist.- Purba Medinipur

5. Central library facilities

College central library contains a large numbers of books. Accommodation of reading room is available in central library where students can study. Xerox printing facility is also



Bajkul Milani Mahavidyalaya

[Govt. Sponsored]

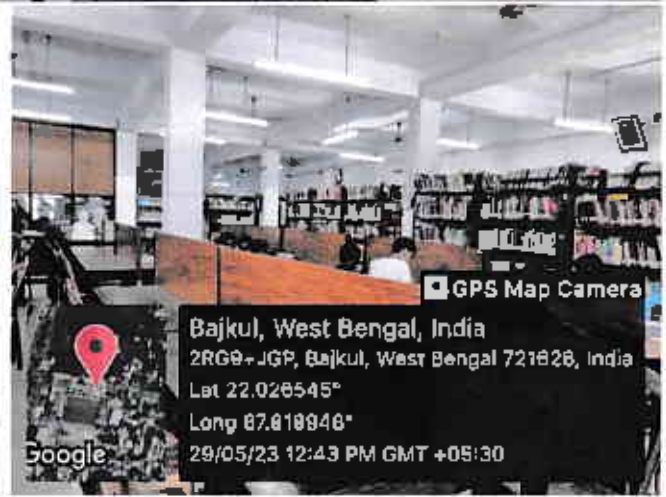
Estd.- 1964

P.O. : Kismat Bajkul ● Dist. : Purba Medinipur ● Pin Code No.- 721655

Fax : 03220-274-291, Web : www.bajkulcollege.org

E-mail : bajkul_college@rediffmail.com

available in the central library. Journals are also available. The central library is kept open throughout the year except holiday and examination time.



Reading room of central library

6. Tutorial classes

Tutorial classes are conducted as per routine. In the central routine tutorial classes are allotted in each session. *Details records are uploaded in the link provided as additional information.*

7. Remedial classes

Remedial classes are conducted for improvement of weaker students. In this matter each department has freedom to take decision. The only restriction is that remedial classes are to be conducted in holiday or out of regular routine time.

Details records are uploaded in the link provided as additional information.

B. Assignments

Assignments are given to students by the respective subject teachers in form of home tasks. Students submit the home works to the teacher within stipulated time period. This method is adopted to increase the problem solving skills, and writing skill of the students. It also helps

ATTESTED
 22/08/2023
 Teacher-in-charge
 Bajkul Milani Mahavidyalaya
 P.O.- Kismat Bajkul
 Dist.- Purba Medinipur



Bajkul Milani Mahavidyalaya

[Govt. Sponsored]

Estd.- 1964

P.O. : Kismat Bajkul ● Dist. : Purba Medinipur ● Pin Code No.- 721655

Fax : 03220-274-291, Web : www.bajkulcollege.org

E-mail : bajkul_college@rediffmail.com

them prepare for their final examination. *Details records are uploaded in the link provided as additional information.*

9. Field Works

Some departments like Geography, Botany, Zoology, Physiology, Nutrition and Automobile Maintenance, History, NSS and Bengali conducts field study, visit to laboratory and industry and also visit to historical spots for enhancement of practical knowledge of students and also to serve the purpose of experiential learning.



Small traders Survey, New Digha beach by students of department of Geography



Dumpy level Survey at Sankarpur by students of department of Geography

ATTESTED
 Ch. [Signature]
 22/08/2013
 Teacher-in-charge
 Bajkul Milani Mahavidyalaya
 P.O.- Kismat Bajkul
 Dist.- Purba Medinipur

Principal : (03220) 274-291

Office : (03220) 274-460



Bajkul Milani Mahavidyalaya

[Govt. Sponsored]

Estd. - 1964

P.O. : Kismat Bajkul ● Dist. : Purba Medinipur ● Pin Code No.- 721655

Fax : 03220-274-291, Web : www.bajkulcollege.org

E-mail : bajkul_college@radiffmail.com



Collection of intertidal fauna by student of Zoology Department



Visit to Digha Mohana fish landing center by student of Zoology Department



Field visit at Tajpur by student of Zoology Department

ATTESTED
[Signature]
22/08/2024
Teacher-in-charge
Bajkul Milani Mahavidyalaya
P.O.- Kismat Bajkul
Dist.- Purba Medinipur

Principal : (03220) 274-291

Office : (03220) 274-460



Bajkul Milani Mahavidyalaya

[Govt. Sponsored]

Estd.- 1964

P.O. : Kismat Bajkul ● Dist. : Purba Medinipur ● Pin Code No.- 721655

Fax : 03220-274-291, Web : www.bajkulcollege.org

E-mail : bajkul_college@rediffmail.com



Visit to Dobaki Forest, Sundarban by student of Zoology Department



Visit to chituri forest, Raidighi Range, Sundarban by student of Zoology Department

ATTESTED

[Signature]
Teacher-in-charge
Bajkul Milani Mahavidyalaya
P.O.- Kismat Bajkul
Dist.- Purba Medinipur

Principal : (03220) 274-291

Office : (03220) 274-460



Bajkul Milani Mahavidyalaya

[Govt. Sponsored]

Estd. - 1964

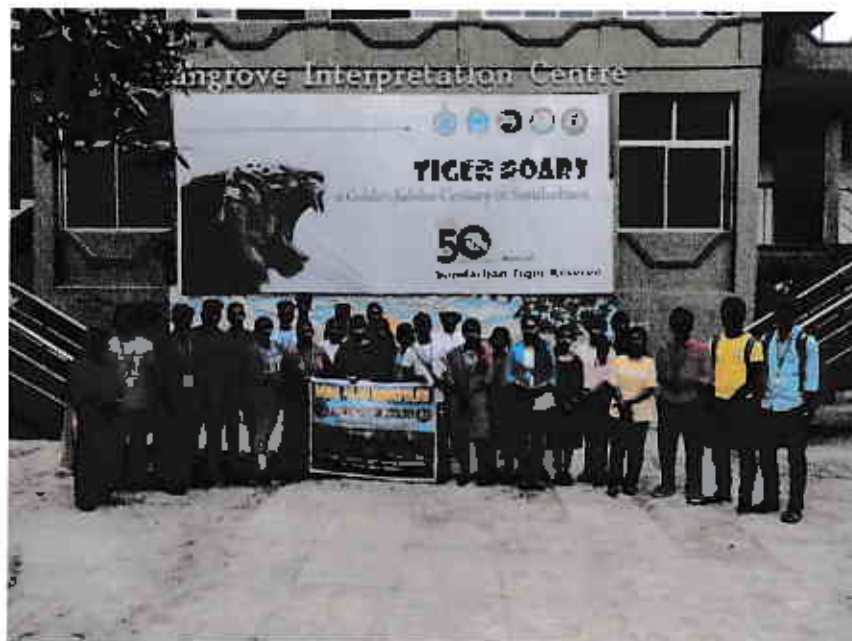
P.O. : Kismat Bajkul ● Dist. : Purba Medinipur ● Pin Code No. - 721655

Fax : 03220-274-291, Web : www.bajkulcollege.org

E-mail : bajkul_college@rediffmail.com



Visit to Sajnekhali Wildlife sanctuary by student of Zoology Department



Visit to Sajnekhali Mangrove interpretation center by student of Zoology Department

ATTESTED
[Signature]
Teacher-in-charge
Bajkul Milani Mahavidyalaya
P.O. - Kismat Bajkul
Dist. - Purba Medinipur

Principal : (03220) 274-291

Office : (03220) 274-460



Bajkul Milani Mahavidyalaya

[Govt. Sponsored]

Estd.- 1964

P.O. : Kismat Bajkul ● Dist. : Purba Medinipur ● Pin Code No.- 721655

Fax : 03220-274-291, Web : www.bajkulcollege.org

E-mail : bajkul_college@rediffmail.com



Visit to Dadabetta by student of Zoology Department



Visit to Gorumara wildlife sanctuary by student of Zoology Department

ATTESTED
[Signature]
22/08/2015
Teacher-in-charge
Bajkul Milani Mahavidyalaya
P.O.- Kismat Bajkul
Dist.- Purba Medinipur

Principal : (03220) 274-291
Office : (03220) 274-460



Bajkul Milani Mahavidyalaya

[Govt. Sponsored]

Estd.- 1964

P.O. : Kismat Bajkul ● Dist. : Purba Medinipur ● Pin Code No.- 721655

Fax : 03220-274-291, Web : www.bajkulcollege.org

E-mail : bajkul_college@rediffmail.com



Visit to Fishery Training Institution, Junput by student of Zoology Department



Socio-economic survey to the Villagers at Tethibari Village by Students of NSS Department

ATTESTED
[Signature]
22/08/2013
Teacher-in-charge
Bajkul Milani Mahavidyalaya
P.O.- Kismat Bajkul
Dist.- Purba Medinipur

Principal : (03220) 274-291

Office : (03220) 274-460



Bajkul Milani Mahavidyalaya

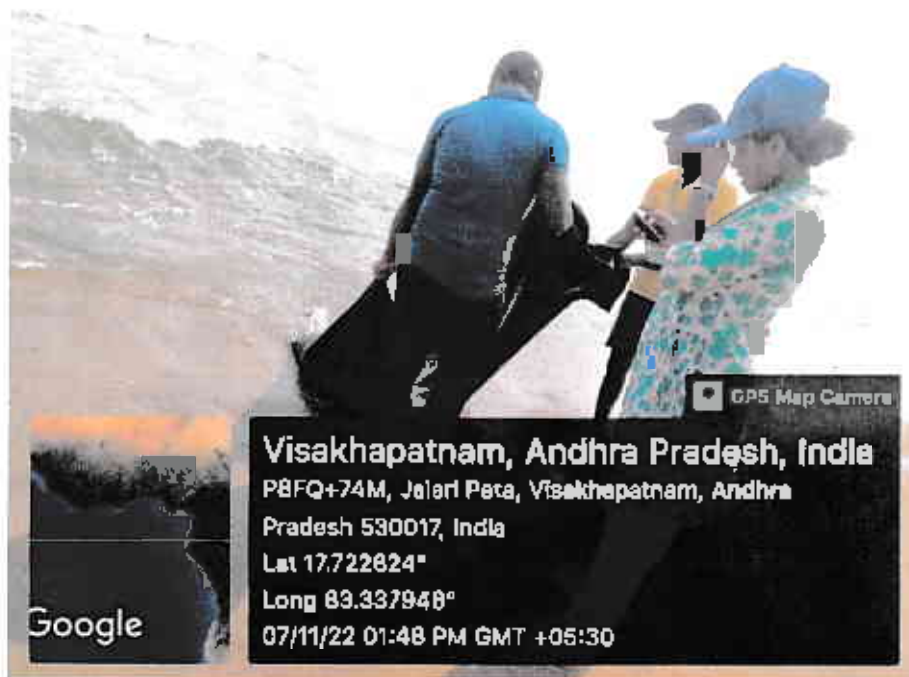
[Govt. Sponsored]

Estd. - 1964

P.O. : Kismat Bajkul ● Dist. : Purba Medinipur ● Pin Code No.- 721655

Fax : 03220-274-291, Web : www.bajkulcollege.org

E-mail : bajkul_college@rediffmail.com



Field study of Department of Geography of Bajkul Milani Mahavidyalaya



Field study on forest of Department of Geography of Bajkul Milani Mahavidyalaya

ATTESTED
C.K. [Signature]
Teacher-in-charge
Bajkul Milani Mahavidyalaya
P.O.- Kismat Bajkul
Dist.- Purba Medinipur



Bajkul Milani Mahavidyalaya

[Govt. Sponsored]

Estd. - 1964

P.O. : Kismat Bajkul ● Dist. : Purba Medinipur ● Pin Code No.- 721655

Fax : 03220-274-291, Web : www.bajkulcollege.org

E-mail : bajkul_college@rediffmail.com

Student Centric Methods & Documentation

1. Power Point Presentation, PDF & YouTube Study materials Link

www.bajkulcollege.org/doc/naac/ppt/1.pptx

www.bajkulcollege.org/doc/naac/ppt/2.pptx

www.bajkulcollege.org/doc/naac/ppt/3.pptx

www.bajkulcollege.org/doc/naac/ppt/4.pptx

www.bajkulcollege.org/doc/naac/ppt/5.pptx

www.bajkulcollege.org/doc/naac/ppt/6.pptx

www.bajkulcollege.org/doc/naac/ppt/7.ppt

www.bajkulcollege.org/doc/naac/ppt/8.ppt

www.bajkulcollege.org/doc/naac/ppt/9.ppt

www.bajkulcollege.org/doc/naac/ppt/10.pptx

www.bajkulcollege.org/doc/naac/ppt/11.ppt

www.bajkulcollege.org/doc/naac/ppt/12.ppt

www.bajkulcollege.org/doc/naac/ppt/13.ppt

www.bajkulcollege.org/doc/naac/ppt/14.ppt

www.bajkulcollege.org/doc/naac/ppt/15.ppt

www.bajkulcollege.org/doc/naac/ppt/16.pptx

www.bajkulcollege.org/doc/naac/ppt/17.pptx

www.bajkulcollege.org/doc/naac/ppt/18.ppt

www.bajkulcollege.org/doc/naac/ppt/19.ppt

www.bajkulcollege.org/doc/naac/ppt/20.pptx

www.bajkulcollege.org/doc/naac/ppt/21.ppt

www.bajkulcollege.org/doc/naac/ppt/22.ppt

www.bajkulcollege.org/doc/naac/ppt/23.ppt

www.bajkulcollege.org/doc/naac/ppt/24.pptx

www.bajkulcollege.org/doc/naac/ppt/25.pptx

www.bajkulcollege.org/doc/naac/ppt/26.ppt

www.bajkulcollege.org/doc/naac/ppt/27.ppt

www.bajkulcollege.org/doc/naac/ppt/28.ppt

www.bajkulcollege.org/doc/naac/ppt/29.pptx

www.bajkulcollege.org/doc/naac/ppt/30.pptx

www.bajkulcollege.org/doc/naac/ppt/31.pptx

www.bajkulcollege.org/doc/naac/ppt/32.pptx

www.bajkulcollege.org/doc/naac/ppt/33.pptx

www.bajkulcollege.org/doc/naac/ppt/34.pptx

www.bajkulcollege.org/doc/naac/ppt/35.pptx

www.bajkulcollege.org/doc/naac/ppt/36.pptx

www.bajkulcollege.org/doc/naac/ppt/37.ppt

www.bajkulcollege.org/doc/naac/ppt/38.pptx

www.bajkulcollege.org/doc/naac/ppt/39.pptx

www.bajkulcollege.org/doc/naac/ppt/40.pptx

Principal : (03220) 274-291

Office : (03220) 274-460



Bajkul Milani Mahavidyalaya

[Govt. Sponsored]

Estd. - 1964

P.O. : Kismat Bajkul ● Dist. : Purba Medinipur ● Pin Code No.- 721655

Fax : 03220-274-291, Web : www.bajkulcollege.org

E-mail : bajkul_college@rediffmail.com

www.bajkulcollege.org/doc/naac/ppt/41.pptx
www.bajkulcollege.org/doc/naac/ppt/42.pptx
www.bajkulcollege.org/doc/naac/ppt/43.pptx
www.bajkulcollege.org/doc/naac/ppt/44.pptx
www.bajkulcollege.org/doc/naac/ppt/45.pptx
www.bajkulcollege.org/doc/naac/ppt/46.pptx
www.bajkulcollege.org/doc/naac/ppt/47.pptx
www.bajkulcollege.org/doc/naac/ppt/48.pptx
www.bajkulcollege.org/doc/naac/ppt/49.pptx
www.bajkulcollege.org/doc/naac/ppt/50.pptx
www.bajkulcollege.org/doc/naac/ppt/51.pptx
www.bajkulcollege.org/doc/naac/ppt/52.pptx
www.bajkulcollege.org/doc/naac/ppt/53.pptx
www.bajkulcollege.org/doc/naac/ppt/54.pptx
www.bajkulcollege.org/doc/naac/ppt/55.pptx
www.bajkulcollege.org/doc/naac/ppt/56.pptx
www.bajkulcollege.org/doc/naac/ppt/57.pptx
www.bajkulcollege.org/doc/naac/ppt/58.pptx
www.bajkulcollege.org/doc/naac/ppt/59.pptx
www.bajkulcollege.org/doc/naac/ppt/60.pptx
www.bajkulcollege.org/doc/naac/ppt/61.pptx
www.bajkulcollege.org/doc/naac/ppt/62.pptx
www.bajkulcollege.org/doc/naac/ppt/63.pptx
www.bajkulcollege.org/doc/naac/ppt/64.pptx
www.bajkulcollege.org/doc/naac/ppt/65.pptx
www.bajkulcollege.org/doc/naac/ppt/66.pptx
www.bajkulcollege.org/doc/naac/ppt/67.pptx
www.bajkulcollege.org/doc/naac/ppt/68.pptx
www.bajkulcollege.org/doc/naac/ppt/69.pptx
www.bajkulcollege.org/doc/naac/ppt/70.pptx
www.bajkulcollege.org/doc/naac/ppt/71.pptx
www.bajkulcollege.org/doc/naac/ppt/72.pptx
www.bajkulcollege.org/doc/naac/ppt/73.pptx
www.bajkulcollege.org/doc/naac/ppt/74.pptx
www.bajkulcollege.org/doc/naac/ppt/75.pptx
www.bajkulcollege.org/doc/naac/ppt/76.pptx
www.bajkulcollege.org/doc/naac/ppt/77.pptx
www.bajkulcollege.org/doc/naac/ppt/78.pptx
www.bajkulcollege.org/doc/naac/ppt/79.pptx
www.bajkulcollege.org/doc/naac/ppt/80.pptx
www.bajkulcollege.org/doc/naac/ppt/81.pptx
www.bajkulcollege.org/doc/naac/ppt/82.pptx
www.bajkulcollege.org/doc/naac/ppt/83.pptx
www.bajkulcollege.org/doc/naac/ppt/84.pptx

Principal : (03220) 274-291

Office : (03220) 274-460



Bajkul Milani Mahavidyalaya

[Govt. Sponsored]

Estd. - 1964

P.O. : Kismat Bajkul ● Dist. : Purba Medinipur ● Pin Code No.- 721655

Fax : 03220-274-291, Web : www.bajkulcollege.org

E-mail : bajkul_college@rediffmail.com

www.bajkulcollege.org/doc/naac/ppt/85.pptx
www.bajkulcollege.org/doc/naac/ppt/86.pptx
www.bajkulcollege.org/doc/naac/ppt/87.pptx
www.bajkulcollege.org/doc/naac/ppt/88.pptx
www.bajkulcollege.org/doc/naac/ppt/89.ppt
www.bajkulcollege.org/doc/naac/ppt/90.ppt
www.bajkulcollege.org/doc/naac/ppt/91.ppt
www.bajkulcollege.org/doc/naac/ppt/92.ppt
www.bajkulcollege.org/doc/naac/ppt/93.ppt
www.bajkulcollege.org/doc/naac/ppt/94.pptx
www.bajkulcollege.org/doc/naac/ppt/95.pptx
www.bajkulcollege.org/doc/naac/ppt/96.pptx
www.bajkulcollege.org/doc/naac/ppt/97.pptx
www.bajkulcollege.org/doc/naac/ppt/98.pptx
www.bajkulcollege.org/doc/naac/ppt/99.pptx
www.bajkulcollege.org/doc/naac/ppt/100.pptx
www.bajkulcollege.org/doc/naac/ppt/101.pptx
www.bajkulcollege.org/doc/naac/ppt/102.pptx
www.bajkulcollege.org/doc/naac/ppt/103.pptx
www.bajkulcollege.org/doc/naac/ppt/104.pptx
www.bajkulcollege.org/doc/naac/ppt/105.pptx
www.bajkulcollege.org/doc/naac/ppt/106.pptx
www.bajkulcollege.org/doc/naac/ppt/107.pptx
www.bajkulcollege.org/doc/naac/ppt/108.ppt
www.bajkulcollege.org/doc/naac/ppt/109.pptx
www.bajkulcollege.org/doc/naac/ppt/110.pptx
www.bajkulcollege.org/doc/naac/ppt/111.pptx
www.bajkulcollege.org/doc/naac/ppt/112.pptx
www.bajkulcollege.org/doc/naac/ppt/113.ppt
www.bajkulcollege.org/doc/naac/ppt/114.ppt
www.bajkulcollege.org/doc/naac/ppt/115.ppt
www.bajkulcollege.org/doc/naac/ppt/116.pptm
www.bajkulcollege.org/doc/naac/ppt/117.pptx
www.bajkulcollege.org/doc/naac/ppt/118.pptx
www.bajkulcollege.org/doc/naac/ppt/119.pptx
www.bajkulcollege.org/doc/naac/ppt/120.pptx
www.bajkulcollege.org/doc/naac/ppt/121.pptx
www.bajkulcollege.org/doc/naac/ppt/122.pptx
www.bajkulcollege.org/doc/naac/ppt/123.pptx
www.bajkulcollege.org/doc/naac/ppt/124.pptx
www.bajkulcollege.org/doc/naac/ppt/125.pptx
www.bajkulcollege.org/doc/naac/ppt/126.pptx
www.bajkulcollege.org/doc/naac/ppt/127.pptx
www.bajkulcollege.org/doc/naac/ppt/128.pptx

Principal : (03220) 274-291

Office : (03220) 274-460



Bajkul Milani Mahavidyalaya

[Govt. Sponsored]

Estd. - 1964

P.O. : Kismat Bajkul ● Dist. : Purba Medinipur ● Pin Code No.- 721655

Fax : 03220-274-291, Web : www.bajkulcollege.org

E-mail : bajkul_college@rediffmail.com

www.bajkulcollege.org/doc/naac/ppt/129.pptx
www.bajkulcollege.org/doc/naac/ppt/130.pptx
www.bajkulcollege.org/doc/naac/ppt/131.pptx
www.bajkulcollege.org/doc/naac/ppt/132.pptx
www.bajkulcollege.org/doc/naac/ppt/133.pptx
www.bajkulcollege.org/doc/naac/ppt/134.pptx
www.bajkulcollege.org/doc/naac/ppt/135.pptx
www.bajkulcollege.org/doc/naac/ppt/136.pptx
www.bajkulcollege.org/doc/naac/ppt/137.pptx
www.bajkulcollege.org/doc/naac/ppt/138.pptx
www.bajkulcollege.org/doc/naac/ppt/139.pptx
www.bajkulcollege.org/doc/naac/ppt/140.pptx
www.bajkulcollege.org/doc/naac/ppt/141.pptx
www.bajkulcollege.org/doc/naac/ppt/142.pptx
www.bajkulcollege.org/doc/naac/ppt/143.pptx
www.bajkulcollege.org/doc/naac/ppt/144.pptx
www.bajkulcollege.org/doc/naac/ppt/145.pptx
www.bajkulcollege.org/doc/naac/ppt/146.pptx
www.bajkulcollege.org/doc/naac/ppt/147.pptx
www.bajkulcollege.org/doc/naac/ppt/148.pptx
www.bajkulcollege.org/doc/naac/ppt/149.pptx
www.bajkulcollege.org/doc/naac/ppt/150.pptx
www.bajkulcollege.org/doc/naac/ppt/151.pptx
www.bajkulcollege.org/doc/naac/ppt/152.pptx
www.bajkulcollege.org/doc/naac/ppt/153.pdf
www.bajkulcollege.org/doc/naac/ppt/154.pdf
www.bajkulcollege.org/doc/naac/ppt/155.pptx
www.bajkulcollege.org/doc/naac/ppt/156.pptx
www.bajkulcollege.org/doc/naac/ppt/157.pdf
www.bajkulcollege.org/doc/naac/ppt/158.pptx
www.bajkulcollege.org/doc/naac/ppt/159.pptx
www.bajkulcollege.org/doc/naac/ppt/160.pptx
www.bajkulcollege.org/doc/naac/ppt/161.pptx
www.bajkulcollege.org/doc/naac/ppt/162.pptx
www.bajkulcollege.org/doc/naac/ppt/163.pptx
www.bajkulcollege.org/doc/naac/ppt/164.pptx
www.bajkulcollege.org/doc/naac/ppt/165.pptx
www.bajkulcollege.org/doc/naac/ppt/166.pptx
www.bajkulcollege.org/doc/naac/ppt/167.pptx
www.bajkulcollege.org/doc/naac/ppt/168.pptx
www.bajkulcollege.org/doc/naac/ppt/169.pptx
www.bajkulcollege.org/doc/naac/ppt/170.pptx
www.bajkulcollege.org/doc/naac/ppt/171.pptx
www.bajkulcollege.org/doc/naac/ppt/172.pptx

Principal : (03220) 274-291

Office : (03220) 274-460



Bajkul Milani Mahavidyalaya

[Govt. Sponsored]

Estd. - 1964

P.O. : Kismat Bajkul ● Dist. : Purba Medinipur ● Pin Code No.- 721655

Fax : 03220-274-291, Web : www.bajkulcollege.org

E-mail : bajkul_college@rediffmail.com

www.bajkulcollege.org/doc/naac/ppt/173.pptx
www.bajkulcollege.org/doc/naac/ppt/174.pptx
www.bajkulcollege.org/doc/naac/ppt/175.pptx
www.bajkulcollege.org/doc/naac/ppt/176.pptx
www.bajkulcollege.org/doc/naac/ppt/177.pptx
www.bajkulcollege.org/doc/naac/ppt/178.pptx
www.bajkulcollege.org/doc/naac/ppt/179.pptx
www.bajkulcollege.org/doc/naac/ppt/180.pptx
www.bajkulcollege.org/doc/naac/ppt/181.pptx
www.bajkulcollege.org/doc/naac/ppt/182.pptx
www.bajkulcollege.org/doc/naac/ppt/183.pptx
www.bajkulcollege.org/doc/naac/ppt/184.pptx
www.bajkulcollege.org/doc/naac/ppt/185.pptx
www.bajkulcollege.org/doc/naac/ppt/186.pptx
www.bajkulcollege.org/doc/naac/ppt/187.pptx
www.bajkulcollege.org/doc/naac/ppt/188.pptx
www.bajkulcollege.org/doc/naac/ppt/189.pptx
www.bajkulcollege.org/doc/naac/ppt/190.pptx
www.bajkulcollege.org/doc/naac/ppt/191.pptx
www.bajkulcollege.org/doc/naac/ppt/192.pptx
www.bajkulcollege.org/doc/naac/ppt/193.pptx
www.bajkulcollege.org/doc/naac/ppt/194.pptx
www.bajkulcollege.org/doc/naac/ppt/195.pptx
www.bajkulcollege.org/doc/naac/ppt/196.pptx
www.bajkulcollege.org/doc/naac/ppt/197.pptx
www.bajkulcollege.org/doc/naac/ppt/198.pptx
www.bajkulcollege.org/doc/naac/ppt/199.pptx
www.bajkulcollege.org/doc/naac/ppt/200.pptx
www.bajkulcollege.org/doc/naac/ppt/201.pptx
www.bajkulcollege.org/doc/naac/ppt/202.pptx
www.bajkulcollege.org/doc/naac/ppt/203.pptx
www.bajkulcollege.org/doc/naac/ppt/204.pptx
www.bajkulcollege.org/doc/naac/ppt/205.pptx
www.bajkulcollege.org/doc/naac/ppt/206.pptx
www.bajkulcollege.org/doc/naac/ppt/207.pptx
www.bajkulcollege.org/doc/naac/ppt/208.pptx
www.bajkulcollege.org/doc/naac/ppt/209.pptx
www.bajkulcollege.org/doc/naac/ppt/210.pptx
www.bajkulcollege.org/doc/naac/ppt/211.pptx
www.bajkulcollege.org/doc/naac/ppt/212.pptx
www.bajkulcollege.org/doc/naac/ppt/213.pptx
www.bajkulcollege.org/doc/naac/ppt/214.pptx
www.bajkulcollege.org/doc/naac/ppt/215.pptx
www.bajkulcollege.org/doc/naac/ppt/216.pptx

Principal : (03220) 274-291

Office : (03220) 274-460



Bajkul Milani Mahavidyalaya

[Govt. Sponsored]

Estd. - 1964

P.O. : Kismat Bajkul ● Dist. : Purba Medinipur ● Pin Code No.- 721655

Fax : 03220-274-291, Web : www.bajkulcollege.org

E-mail : bajkul_college@rediffmail.com

www.bajkulcollege.org/doc/naac/ppt/217.pptx
www.bajkulcollege.org/doc/naac/ppt/218.pptx
www.bajkulcollege.org/doc/naac/ppt/219.pptx
www.bajkulcollege.org/doc/naac/ppt/220.pptx
www.bajkulcollege.org/doc/naac/ppt/221.pptx
www.bajkulcollege.org/doc/naac/ppt/222.pptx
www.bajkulcollege.org/doc/naac/ppt/223.pptx
www.bajkulcollege.org/doc/naac/ppt/224.pptx
www.bajkulcollege.org/doc/naac/ppt/225.pptx
www.bajkulcollege.org/doc/naac/ppt/226.pptx
www.bajkulcollege.org/doc/naac/ppt/227.pptx
www.bajkulcollege.org/doc/naac/ppt/228.pptx
www.bajkulcollege.org/doc/naac/ppt/229.pptx
www.bajkulcollege.org/doc/naac/ppt/230.pptx
www.bajkulcollege.org/doc/naac/ppt/231.pptx
www.bajkulcollege.org/doc/naac/ppt/232.pptx
www.bajkulcollege.org/doc/naac/ppt/233.pptx
www.bajkulcollege.org/doc/naac/ppt/234.pptx
www.bajkulcollege.org/doc/naac/ppt/235.pptx
www.bajkulcollege.org/doc/naac/ppt/236.pptx
www.bajkulcollege.org/doc/naac/ppt/237.pptx
www.bajkulcollege.org/doc/naac/ppt/238.pptx
www.bajkulcollege.org/doc/naac/ppt/239.pptx
www.bajkulcollege.org/doc/naac/ppt/240.pptx
www.bajkulcollege.org/doc/naac/ppt/241.pptx
www.bajkulcollege.org/doc/naac/ppt/242.pptx
www.bajkulcollege.org/doc/naac/ppt/243.pptx
www.bajkulcollege.org/doc/naac/ppt/244.pptx
www.bajkulcollege.org/doc/naac/ppt/245.pptx
www.bajkulcollege.org/doc/naac/ppt/246.pptx
www.bajkulcollege.org/doc/naac/ppt/247.pptx
www.bajkulcollege.org/doc/naac/ppt/248.pptx
www.bajkulcollege.org/doc/naac/ppt/249.pptx
www.bajkulcollege.org/doc/naac/ppt/250.pptx
www.bajkulcollege.org/doc/naac/ppt/251.pptx
www.bajkulcollege.org/doc/naac/ppt/252.pptx
www.bajkulcollege.org/doc/naac/ppt/253.pptx
www.bajkulcollege.org/doc/naac/ppt/254.pptx
www.bajkulcollege.org/doc/naac/ppt/255.pptx
www.bajkulcollege.org/doc/naac/ppt/256.pptx
www.bajkulcollege.org/doc/naac/ppt/257.pptx
www.bajkulcollege.org/doc/naac/ppt/258.pptx
www.bajkulcollege.org/doc/naac/ppt/259.pptx
www.bajkulcollege.org/doc/naac/ppt/260.pdf

Principal : (03220) 274-291

Office : (03220) 274-460



Bajkul Milani Mahavidyalaya

[Govt. Sponsored]

Estd. - 1964

P.O. : Kismat Bajkul ● Dist. : Purba Medinipur ● Pin Code No.- 721655

Fax : 03220-274-291, Web : www.bajkulcollege.org

E-mail : bajkul_college@rediffmail.com

www.bajkulcollege.org/doc/naac/ppt/261.pdf
www.bajkulcollege.org/doc/naac/ppt/262.pdf
www.bajkulcollege.org/doc/naac/ppt/263.pdf
www.bajkulcollege.org/doc/naac/ppt/264.pdf
www.bajkulcollege.org/doc/naac/ppt/265.pdf
www.bajkulcollege.org/doc/naac/ppt/266.pptx
www.bajkulcollege.org/doc/naac/ppt/267.pptx
www.bajkulcollege.org/doc/naac/ppt/268.pptx
www.bajkulcollege.org/doc/naac/ppt/269.pptx
www.bajkulcollege.org/doc/naac/ppt/270.pptx
www.bajkulcollege.org/doc/naac/ppt/271.pptx
www.bajkulcollege.org/doc/naac/ppt/272.pptx
www.bajkulcollege.org/doc/naac/ppt/273.pptx
www.bajkulcollege.org/doc/naac/ppt/274.pptx
www.bajkulcollege.org/doc/naac/ppt/275.pptx
www.bajkulcollege.org/doc/naac/ppt/276.pdf
www.bajkulcollege.org/doc/naac/ppt/277.pptx
www.bajkulcollege.org/doc/naac/ppt/278.pptx
www.bajkulcollege.org/doc/naac/ppt/279.pptx
www.bajkulcollege.org/doc/naac/ppt/280.pptx
www.bajkulcollege.org/doc/naac/ppt/281.pptx
www.bajkulcollege.org/doc/naac/ppt/282.ppt
www.bajkulcollege.org/doc/naac/ppt/283.pptx
www.bajkulcollege.org/doc/naac/ppt/284.ppt
www.bajkulcollege.org/doc/naac/ppt/285.ppt
www.bajkulcollege.org/doc/naac/ppt/286.ppt
www.bajkulcollege.org/doc/naac/ppt/287.ppt
www.bajkulcollege.org/doc/naac/ppt/288.ppt
www.bajkulcollege.org/doc/naac/ppt/289.ppt
www.bajkulcollege.org/doc/naac/ppt/290.pptx
www.bajkulcollege.org/doc/naac/ppt/291.ppt
www.bajkulcollege.org/doc/naac/ppt/292.pptx
www.bajkulcollege.org/doc/naac/ppt/293.pptx
www.bajkulcollege.org/doc/naac/ppt/294.pptx
www.bajkulcollege.org/doc/naac/ppt/295.ppt
www.bajkulcollege.org/doc/naac/ppt/296.ppt
www.bajkulcollege.org/doc/naac/ppt/297.ppt
www.bajkulcollege.org/doc/naac/ppt/298.ppt
www.bajkulcollege.org/doc/naac/ppt/299.ppt
www.bajkulcollege.org/doc/naac/ppt/300.ppt
www.bajkulcollege.org/doc/naac/ppt/301.ppt
www.bajkulcollege.org/doc/naac/ppt/302.pptx
www.bajkulcollege.org/doc/naac/ppt/303.pptx
www.bajkulcollege.org/doc/naac/ppt/304.pptx

Principal : (03220) 274-291

Office : (03220) 274-460



Bajkul Milani Mahavidyalaya

[Govt. Sponsored]

Estd. - 1964

P.O. : Kismat Bajkul ● Dist. : Purba Medinipur ● Pin Code No.- 721655

Fax : 03220-274-291, Web : www.bajkulcollege.org

E-mail : bajkul_college@rediffmail.com

www.bajkulcollege.org/doc/naac/ppt/305.pptx
www.bajkulcollege.org/doc/naac/ppt/306.pptx
www.bajkulcollege.org/doc/naac/ppt/307.pptx
www.bajkulcollege.org/doc/naac/ppt/308.pptx
www.bajkulcollege.org/doc/naac/ppt/309.pptx
www.bajkulcollege.org/doc/naac/ppt/310.pptx
www.bajkulcollege.org/doc/naac/ppt/311.pptx
www.bajkulcollege.org/doc/naac/ppt/312.pptx
www.bajkulcollege.org/doc/naac/ppt/313.pptx
www.bajkulcollege.org/doc/naac/ppt/314.pptx
www.bajkulcollege.org/doc/naac/ppt/315.pptx
www.bajkulcollege.org/doc/naac/ppt/316.pptx
www.bajkulcollege.org/doc/naac/ppt/317.pptx
www.bajkulcollege.org/doc/naac/ppt/318.pptx
www.bajkulcollege.org/doc/naac/ppt/319.pptx
www.bajkulcollege.org/doc/naac/ppt/320.pptx
www.bajkulcollege.org/doc/naac/ppt/321.pptx
www.bajkulcollege.org/doc/naac/ppt/322.pptx
www.bajkulcollege.org/doc/naac/ppt/323.pptx
www.bajkulcollege.org/doc/naac/ppt/324.pptx
www.bajkulcollege.org/doc/naac/ppt/325.pptx
www.bajkulcollege.org/doc/naac/ppt/326.pptx
www.bajkulcollege.org/doc/naac/ppt/327.pptx
www.bajkulcollege.org/doc/naac/ppt/328.pptx
www.bajkulcollege.org/doc/naac/ppt/329.pptx
www.bajkulcollege.org/doc/naac/ppt/330.pptx
www.bajkulcollege.org/doc/naac/ppt/331.pptx
www.bajkulcollege.org/doc/naac/ppt/332.pptx
www.bajkulcollege.org/doc/naac/ppt/333.pptx
www.bajkulcollege.org/doc/naac/ppt/334.pptx
www.bajkulcollege.org/doc/naac/ppt/335.pptx
www.bajkulcollege.org/doc/naac/ppt/336.pptx
www.bajkulcollege.org/doc/naac/ppt/337.pptx
www.bajkulcollege.org/doc/naac/ppt/338.pptx
www.bajkulcollege.org/doc/naac/ppt/339.pptx
www.bajkulcollege.org/doc/naac/ppt/340.pptx
www.bajkulcollege.org/doc/naac/ppt/341.pptx
www.bajkulcollege.org/doc/naac/ppt/342.pptx
www.bajkulcollege.org/doc/naac/ppt/343.pptx
www.bajkulcollege.org/doc/naac/ppt/344.pptx
www.bajkulcollege.org/doc/naac/ppt/345.pptx
www.bajkulcollege.org/doc/naac/ppt/346.pptx
www.bajkulcollege.org/doc/naac/ppt/347.pptx
www.bajkulcollege.org/doc/naac/ppt/348.pptx

Principal : (03220) 274-291

Office : (03220) 274-460



Bajkul Milani Mahavidyalaya

[Govt. Sponsored]

Estd. - 1964

P.O. : Kismat Bajkul ● Dist. : Purba Medinipur ● Pin Code No.- 721655

Fax : 03220-274-291, Web : www.bajkulcollege.org

E-mail : bajkul_college@rediffmail.com

www.bajkulcollege.org/doc/naac/ppt/349.pptx
www.bajkulcollege.org/doc/naac/ppt/350.pptx
www.bajkulcollege.org/doc/naac/ppt/351.pptx
www.bajkulcollege.org/doc/naac/ppt/352.pptx
www.bajkulcollege.org/doc/naac/ppt/353.pptx
www.bajkulcollege.org/doc/naac/ppt/354.pptx
www.bajkulcollege.org/doc/naac/ppt/355.pptx
www.bajkulcollege.org/doc/naac/ppt/356.pptx
www.bajkulcollege.org/doc/naac/ppt/357.pptx
www.bajkulcollege.org/doc/naac/ppt/358.pptx
www.bajkulcollege.org/doc/naac/ppt/359.pptx
www.bajkulcollege.org/doc/naac/ppt/360.pptx
www.bajkulcollege.org/doc/naac/ppt/361.pptx
www.bajkulcollege.org/doc/naac/ppt/362.pptx
www.bajkulcollege.org/doc/naac/ppt/363.pptx
www.bajkulcollege.org/doc/naac/ppt/364.pptx
www.bajkulcollege.org/doc/naac/ppt/365.docx
www.bajkulcollege.org/doc/naac/ppt/366.ppt
www.bajkulcollege.org/doc/naac/ppt/367.ppt
www.bajkulcollege.org/doc/naac/ppt/368.pptx
www.bajkulcollege.org/doc/naac/ppt/369.pptx
www.bajkulcollege.org/doc/naac/ppt/370.ppt
www.bajkulcollege.org/doc/naac/ppt/371.pdf
www.bajkulcollege.org/doc/naac/ppt/372.pptx
www.bajkulcollege.org/doc/naac/ppt/373.pptx
www.bajkulcollege.org/doc/naac/ppt/374.pptx
www.bajkulcollege.org/doc/naac/ppt/375.pptx
www.bajkulcollege.org/doc/naac/ppt/376.pptx
www.bajkulcollege.org/doc/naac/ppt/377.pptx
www.bajkulcollege.org/doc/naac/ppt/378.pptx
www.bajkulcollege.org/doc/naac/ppt/379.ppt
www.bajkulcollege.org/doc/naac/ppt/380.ppt
www.bajkulcollege.org/doc/naac/ppt/381.ppt
www.bajkulcollege.org/doc/naac/ppt/382.pptx
www.bajkulcollege.org/doc/naac/ppt/383.ppt
www.bajkulcollege.org/doc/naac/ppt/384.ppt
www.bajkulcollege.org/doc/naac/ppt/385.ppt
www.bajkulcollege.org/doc/naac/ppt/386.pptx
www.bajkulcollege.org/doc/naac/ppt/387.ppt
www.bajkulcollege.org/doc/naac/ppt/388.ppt
www.bajkulcollege.org/doc/naac/ppt/389.pptx
www.bajkulcollege.org/doc/naac/ppt/390.pptx
www.bajkulcollege.org/doc/naac/ppt/391.pptx
www.bajkulcollege.org/doc/naac/ppt/392.ppt

Principal : (03220) 274-291

Office : (03220) 274-460



Bajkul Milani Mahavidyalaya

[Govt. Sponsored]

Estd. - 1964

P.O. : Kismat Bajkul ● Dist. : Purba Medinipur ● Pin Code No.- 721655

Fax : 03220-274-291, Web : www.bajkulcollege.org

E-mail : bajkul_college@rediffmail.com

www.bajkulcollege.org/doc/naac/ppt/393.ppt

www.bajkulcollege.org/doc/naac/ppt/394.pptx

www.bajkulcollege.org/doc/naac/ppt/395.ppt

<https://www.youtube.com/watch?v=uBSUKReTvlU>

<https://www.youtube.com/watch?v=9JnykKslaH4>

<https://www.youtube.com/watch?v=q7jl4-Sulxg>

<https://www.youtube.com/watch?v=m-GG7XqAeJo>

<https://youtu.be/yUbmS6zv3nM>

Remedial Class

www.bajkulcollege.org/doc/naac/All_Remedial.pdf

Tutorial Class

www.bajkulcollege.org/doc/naac/All_Tutorials.pdf

Books, Instrument, Online Journal & Magazine

www.bajkulcollege.org/doc/naac/All_Book_Magazine.pdf

Department of Botany

List of Equipments

1. Lamina Airflow
2. Light Microscope
3. Binocular Light Microscope
4. Autoclave
5. Incubator
6. Hot air oven
7. Water distillation plant
8. Centrifuge
9. Colorimeter
9. Water purifier
10. Refrigerator
11. Arc indicator
12. Electronic weight machine
13. Rain gauge
14. Lux meter
15. Anemometer
16. Hygrometer
17. pH meter
18. Thermometer (Max and Min)
19. Soil thermometer

Chemistry Department

Apparatus stock in Store

1. Beaker -500ml -15 pieces
2. Beaker – 1 lit –
3. Beaker – 250 ml - 30 pieces
4. Beaker -100 ml -40 pieces
5. Conical flask - 500ml – 20 pieces
6. Conical flask - 250 ml – 28 pieces
7. Conical flask - 100 ml –
8. Stopper conical flask – 250 ml - 6 pieces
9. Burette -12 pieces
10. Funnel - 30 pieces
11. Pipette - 25 ml –
12. Pipette – 20 ml –
13. Kipps apparatus - 2 pieces
14. (G)Pipette – 10ml – nil
15. (G)Pipette – 5ml – 5 pieces
16. (G)Pipette – 2ml – nil
17. (G)Pipette – 25ml – nil
18. (G)Pipette – 20ml – nil
19. Volumetric flask - 1 lit – 4 pieces
20. Volumetric flask - 500 ml – nil
21. Volumetric flask - 250 ml - 4 pieces
22. Volumetric flask - 100 ml – nil
23. Measuring cylinder - 1 lit – 2 pieces
24. Measuring cylinder - 500 ml – nil
25. Measuring cylinder - 250 ml –nil
26. Measuring cylinder - 200 ml – nil
27. Measuring cylinder - 100 ml – 10 pieces
28. Measuring cylinder - 50 ml – 10 pieces
29. Measuring cylinder - 25 ml -10 pieces
30. Measuring cylinder - 10 ml – 15 pieces
31. Reagent Bottle – 500 ml – 20 pieces
32. Reagent Bottle - 250 ml -48 pieces
33. Reagent Bottle – 100 ml – nil
34. Watch glass (small) – 15 pieces
35. Double blue glass – 2x10 pieces
36. Specific gravity Bottle – 20 pieces
37. Weighing Bottle – 15 pieces
38. Viscometer - nil
39. Stalagmometer - nil
40. Mortar – 21 pieces

Chemistry Department

41. Glass Rod – nil
42. Glass tube - nil
43. Fusion tube - nil
44. Test tube stand - nil
45. Burette stand - 6 pieces
46. Pipette stand - nil
47. Round bottle flask – 100 ml – 20 pieces
48. Separating funnel – 2 pieces
49. Acid bulb – 6 pieces
50. Spot plate - 8 pieces
51. Electric water bath – 1 piece
52. Indicator bottle -100 ml – 10 pieces
53. Thermometer - 1 piece
54. Mica foil - 3 kg

Apparatus stock of General laboratory

1. Beaker – 500 ml – 6 pieces
2. Beaker – 250 ml – 10 pieces
3. Beaker – 100 ml – 8 pieces
4. Conical flask – 500 ml – 15 pieces
5. Conical flask – 250 ml – 6 pieces
6. Volumetric flask – 250 ml – 15 pieces
7. Pipette – 25 ml – 4 pieces
8. Burette – 50 ml- 16 pieces
9. Funnel - 16 pieces
10. Kipps apparatus - 1 piece
11. Burette stand – 18 pieces
12. Reagent bottle – 250 ml – 18 pieces
13. Reagent bottle – 100 ml – 30 pieces
14. Reagent bottle – 2 lit – 8 pieces

Organic laboratory:

1. Boiling point apparatus (distiller+condenser+collector +standard joints)--- 6 sets.
2. TLC plates (glass):10cm x2cm----- 48pcs.
3. TLC chamber (height 12cm x cylindrical or rectangular) with cover-----6pcs.
4. Iodine chamber (height 12cm x cylindrical or rectangular) with cover-----6pcs.

Chemistry Department

Apparatus stock in inorganic (H) Lab

1. Reagent bottle – 100 ml – 148 pieces
2. Reagent bottle – 250 ml – 36 pieces
3. Reagent bottle – 500 ml – 76 pieces
4. Mortar – 23 pieces
5. Mortar handle –
6. Table (big for preparation) – 1 piece
7. Table (available) – 3 pieces
8. Tule – 1 piece
9. Water bottle - 16 pieces
10. Bucket - 10 pieces
11. Burette stand – 15 pieces
12. Funnel stand – 14 pieces
13. C stand – 7 pieces
14. Brush (big) – 1 piece
15. Measuring cylinder (500 ml) – 2 pieces
16. Beaker - 500 ml – 2 pieces
17. Distil water bottle – 20 lit – 1 piece
18. Mug - 1 lit - 1 piece
19. Chair (fiber) - 1 piece
20. Hot air oven – 1 piece
21. Water bath - 1 piece
22. Bottle – 2.5 lit – 28 pieces
23. Fume (glass) chamber apparatus – 21 pieces
24. Melting point acid bulb – 3 pieces
25. Thermometer – 3 pieces
26. Conc. Acid bottle – 500 ml – 2 pieces
27. Conc. Acid bottle – 250 ml – 1 piece
28. Test tube stand – 16 pieces
29. Gamla – 1 piece
30. Bunsen gas burner - 28 pieces
31. Burner stand – 28 pieces
32. Net – 28 pieces

Apparatus stock in Physical Lab

1. Beaker - 1 lit – 1 piece
2. Beaker – 500 ml - 8 pieces
3. Beaker – 250 ml – 20 pieces

Chemistry Department

4. Beaker - 100 ml – 25 pieces
5. Conical flask – 500ml – 15 pieces
6. Conical flask – 250 ml – 10 pieces
7. Conical flask – 100 ml – 40 pieces
8. Volumetric flask – 500 ml – 12 pieces
9. Volumetric flask – 250 ml - 14 pieces
10. Volumetric flask – 100 ml – 2 pieces
11. Pipette – 25 ml – 15 pieces
12. Pipette – 10 ml – 14 pieces
13. Pipette – 5 ml – 8 pieces
14. Burette – 50 ml – 14 pieces
15. Funnel - 22 pieces
16. Burette stand –
17. Viscometer – 5 pieces
18. Stalagmometer – 12 pieces
19. Specific gravity bottle – 10 pieces
20. Test tube stand –
21. pH meter – 1 piece
22. glass test tube – 6 pieces
23. Pipette stand -16 pieces
24. Water bottle – 10 pieces
25. Thermometer – 4 pieces
26. Copper colorimeter – 2 pieces
27. Reagent bottle – 500ml – 16 pieces
28. Reagent bottle – 250 ml – 2 pieces
29. Reagent bottle – 100 ml – 5 pieces
30. Potentiometer – 1 piece
31. Colorimeter – 1 piece
32. Polarimeter – 1 piece
33. Measuring cylinder – 100 ml - 2 pieces
34. Measuring cylinder – 50 ml – 1pieces
35. Measuring cylinder – 10 ml – 1 piece
36. Balance – 3 pieces

Apparatus Stock in Preparation Room

1. Beaker – 500 ml -17 pieces
2. Beaker – 250 ml –
3. Beaker -100 ml -40 pieces
4. Conical – 250 ml – 8 pieces

Chemistry Department

5. Conical- 500 ml – 4 pieces
6. Stopper conical - 250 ml – 4 pieces
7. Stopper conical – 100 ml – 10 pieces
8. Round bottle flask – 100 ml – 11 pieces
9. Volumetric flask – 250 ml – 12 pieces
10. Round bottle flask – 500 ml – 5 pieces
11. Barrel ----- 6 pieces
12. Volumetric bottle – 1 lit – 3 pieces
13. Filter paper – 1 Rim
14. Test tube stand -14 pieces
15. Measuring cylinder – 100 ml – 2pieces
16. Measuring cylinder- 25 ml – 2pieces
17. Measuring cylinder- 10 ml – 2pieces
18. Measuring cylinder- 1 lit – 2 pieces
19. Beaker – 1 lit – 2 pieces
20. Wire gauge –
21. Asbestos board - 6pieces

Stock Register of Physics Department

SL. NO.	NAME OF INSTRUMENT	No. OF INSTRUMENT
1	To study the analog digital converter (ADC) IC	1
2	To design an inverting amplifier using Op-amp (741,351) for dc voltage of given gain	1
3	To investigate the use of an op-amp as an Integrator	1
4	To determine the Boltzmann constant using V-I characteristics of PN junction diode	1
5	Hemispherical black body for Stefan's law of radiation	1
6	To determine the refractive index of liquid by total internal reflection using Wollaston's air - film	1
7	To determine the refractive Index of (1) glass and (2) a liquid by total internal reflection using a Gaussian eyepiece	1
8	Parafine	500ml
9	Bread board	20
10	Table lamp	2
11	RMS Volt meter ACM-102	1
12	Laser diffraction double slit	1
13	To study AM Transmitter and Receiver	1
14	To study envelope detector for demodulation of AM signal	1
15	To study pulse Amplitude Modulation (PAM)	1
16	To study pulse position Modulation(PPM)	1
17	IC 7400, 7402, 7404, 7408, 7432, 7410	60
18	IC 741	30
19	IC 7476	10
20	Transistor PNP, NPN	200
21	P N Diode 5.6	100
22	Zener diode 4007	100
23	LED different colour	40
24	Rubber pipe	10mt
25	Glass tube	10
26	Resistance series	34 set
27	Power Supply 0 to 15v with digital meter 1AMP	4
28	0-10v with digital meter 1AMP	2
29	+ - 12v power supply with digital meter 1AMP	2
30	Fixed power supply 2v	3
31	Pot 1K, 10K, 15K	30
32	Regulated power supply (0 to 10v dc with digital voltmeter)	10
33	Electric heater 1K.W	4
34	Spectrometer prism, 38X38	2
35	Diffraction grating, 600 lines/mm	2
36	Diffraction grating, 300 lines/mm	2
37	Grating Holder	1
38	Power supply, + - 12v	5
39	Thermocouple junction	5
40	Callender & Bernes Apperatus	1
41	Platinum Resistance thermometer	2
42	Convex Lense, 50mm 10cm	10
43	Convex Lense, 50mm 15cm	10
44	Convex Lense, 50mm 20cm	10
45	Convex Lense, 60mm 10cm	10
46	Convex Lense, 60mm 15cm	10
47	Convex Lense, 60mm 20cm	10
48	Bi-prism 50X40mm	2
49	Hydrogen tube with power supply	1
50	Hydrogen tube	1
51	e/m by bar magnet method	1
52	Hall probe	1pc
53	Diffraction grating 2500 & 7500 LPI	2
54	Coupled Oscillator	1

Stock Register of Physics Department

55	Seales thermal conductivity of Cu	1
56	CRO 30MHz	1
57	Function generator 3MHz	2
58	Dead beat Galvanometer	2
59	Digital Multi-meter	10
60	Cooper rod	2
61	Sodium bulb with source	1
62	Mercury	1kg
63	Four probe Method	1set
64	Setup to study absorption line in rotational spectra of iodine vapour	1set
65	Ammonium chloride	500gmX2
66	Ammeter (0-5AMP)	5
67	Magnifying glass	10
68	Moment of Innertia with fly wheel	1pc
69	Young's modulus	1pc
70	Bar pendulum	1pc
71	Karter's pendulum	1pc
72	Spring constant Apperatus	1pc
73	Digital stop watch	5pc
74	Young's modulus with optical lever	1pc
75	CRO 30MHz, Dual trace, scientific make, model no,SM-203-M	1
76	Function generator, upto 3MHz,scientific make, model no, SM-5071	2
77	Laser diffraction Apparatus	1
78	Standard solenoid, capacity 8Amps	1
79	Slide calliper (Brass)	2
80	Spot reflecting Galvanometer	1
81	Spherometer 1/100mm	6
82	Screw Gauge, stainless steel 25X1mm	10pcs
83	Slide calliper (Brass)	8pcs
84	Crocodile to BNC Cord	10
85	BNC to BNC cord	5
86	LDR	5
87	Transistor CL-100	20
88	Transistor BC-107	20
89	Capacitor, 0.22, 0.33, 0.47, 0.01, 0.02, (50pcs each X 5= 250pcs)	250
90	Capacitor, 0.11 & 3300pF (50pcs each)	100
91	Capacitor 22mfd	50
92	Pot (1K, 10K, 100K) 5pcs each	15
93	Diode, 1N 4148	50
94	potentiometer	1
95	Meter Bridge	1
96	Standard Inductor, 3mH	5
97	Standard Inductor, 5mH	5
98	Heating mantle, 500ml	1
99	Fixed power supply 2v	2
100	Lux meter	1
101	Combination Lense Holder	2
102	Load Box	2
103	A.C Milivoltameter	1
104	Travelling Microscope	1
105	Single wire	3 coil
106	Digital Millimeter 200mA	10pc
107	Digital Voltmeter 20v	5
108	Digital Millimeter 20mA	2
109	cutter	10
110	Bread Board	10
111	Newton's Ring Set	1
112	Sodium Lamp	2
113	Combination Lense	4
114	Capillary tube	10

Stock Register of Physics Department

115	Fuse (0.3,0.5,3Amp)	1pack
116	R/ Tube(Rubber)	2c(oil)
117	Capacitor (0.001,0.01,0.1,0.22,0.33,0.47)	
118	Inductor (0.5/1.0)	2pcs
119	Ballistic Galvanometer	2pcs
120	I.C 741	50pcs
121	I.C 7404,08,00,32,86,02	60pcs
123	Zener Diode	100pcs
124	Transistor CL 100	100
125	Measuring cylinder(500ml)	10pcs
126	Measuring cylinder(100ml)	10pcs
127	Capacitor(47amp)	100pcs
128	Capacitor(10,100amp)	100pcs
129	Capacitor(220,3.3,4.7)	75pcs
130	Capacitor(0.1 micro F)	50pcs
131	Capacitor	450
132	Capillary tube for surface tension	10Tube
133	Lense for Newton's ring	2set
134	Weight Box	1
135	Copper Sulphate	1X500gm
136	L-C-R multimeter	3
137	Operational Amplifier Board	1
138	Glass flask for Pl. Res. thermometer	2
139	Weight Box	2
140	mercury vapour lamp nphillips	3
141	Spectrometer 10 ⁿ 20 sec	1
142	Helium tube with polerimeter	1
143	Digital micrometer 200 micro A	5
144	Digital micrometer 20 micro a	6
145	Digital milimeter 200mA	10
146	Function generator, DOT-443	2
147	Band gap of semi-conductor diode apprt.	1set
148	Copper hypsometer	2
149	Thermo-Couple junction	1set
150	Heater for Thermocouple	1ocs
151	Disc for Lee's Apprt.	2
152	Steel wire for Ragidity Dynamic method	2
153	Sodium vapour lamp with transformer	2set
154	CRO scientific	1pc
155	Function generator 2MHz DOT TECH	2pcs
156	Microprocessor-8085	1set
157	Thermometer 110X1	10
158	Resistance Box 0.001 ohms	2pcs
159	Cathode Ray oscilloscope(CRO) Dual trace, 30MHz, scientific make	1
160	Mercury, pure	1kg
161	Digital multimeter, Metravi	2
162	Digital balance, cap, 300gm sens,10mgm	1
163	100killo ohms pot with torminals	5
164	Single wire for connection purpose	4 coil
165	Plank's constant set with Filter	1set
166	CRO(Main Cord)	3pcs
167	Repairing of suspended coil Galvanometer chance change of suspension wire and spring	4pcs
168	Repairing of transistor set- repairing of Digital meters	1pc
169	Repairing of Zener diode set- repairing of digital meters	1
170	Repairing of Operational amplifier set repairing of regulatyed power supply	1
171	Repairing Resistance box- repairing of coils.	6pcs
172	Brass sprit Level	6pcs
173	Glass flask for Platinum thermometer	2pcs

Stock Register of Physics Department

174	Repairing of platinum resistance thermometer- change of borosil tube, and connections.	1pc
175	Repairing of A.C millivoltmeter-change of probe	1
176	Ballistic Galvanometer, OSWA TYPE, Coil Resistance 100ohms, CDR=2000ohms, T.P= 8 to 10 sec	1
177	Hall probe (Ge. Crystal n-type)	1
178	Hall probe (Ge. Crystal p-type)	1
179	Hall probe stand (wooden)	3
180	Hall effect set up	1
181	Electromagnet	1
182	Constant current power supply	1
183	Digital Gaussmeter	1
184	Capacitor 4700pE	50
185	Capacitor 100pE	50
186	Capacitor 100/25v	20
187	Capacitor 1000/25v	10
188	Temperature of co-efficient coil	20
189	Table Galvanometer, 4'/2" scale	6pcs
190	Spere Valve for Triode	4pcs
191	Digital trainer Board,	2
192	Transistor characteristics C-B Mode	2
193	Phase – shift oscillator	1
194	Construction of Regulated power supply	1
195	C-B Applifier Board	1set
196	Negative feed back Amplifier	1
197	Wien Bridge oscillator Board	1
198	Capillary tube for Viscosity Apprt.	2
199	Op-Amp. IC-741	10
200	Electro- magnet with search coil	1
201	Regulated power supply 0-30v, 5Amp	1
202	Stefan's Radiation constant with Thermo-Couple	1
203	Function generator 1Hz- 1MHz	1
204	Triode valve(605)	1
205	Plug type resistance Box 1-10,000 ohms (sett & Dey Make)	4pcs
206	Plug type resistance Box 1-100 ohms (sett & Dey Make)	4
207	Plug type resistance Box 0.01-10 ohms (sett & Dey Make)	4
208	Fixed Resistance (standard), Sett & Dey Make	4
209	Sliding Intermittent-Rating Rheostat 100 ohms,3amps.(Sett & Dey Make)	4
210	One way plug Key's (Sett & Dey Make)	4
212	Four way plug commutator, Sett & Dey Make)	4
213	Aniline (E Marck) (2X500ml)	1000ml
214	Mirror	12
215	Filter paper 11cm	2pack
216	Rough Balance with weights	1set
217	Weights set for moment of Inertia	1set
218	Stock's Law apprt.	1
219	Castor oil	5kg
220	Steel balls set (4shiff series)	1set
221	Meldc's apprt.	1set
222	Pin stand 12" long	2pcs
223	Beaker (1L)	1pc
224	Tuning Fork set	1set
225	Thermistor characteristics set	1set
226	Sonometer	1
227	Servo stabilizer (5kva)	1
228	Logic gate for Hons. Exp.	1
229	Semiconductor diode characteristics apprt.	1
230	Tapping Key	6
231	Rubber tubing	2coil

INSTRUMENT'S NAME

ZOOLOGY

SL.NO	INSTRUMENT'S NAME	NUMBER	ACTIVE	INACTIVE
1.	Light Microscope	04	02	02
2.	Simple Microscope	08	08	00
3.	Compound microscope	19	05	14
4.	Incubator	02	01	01
5.	Digital colorimeter	02	01	00
6.	PH Meter (Digital)	02	00	02
7.	Spectrophotomete	01	01	00
8.	Microtome	01	01	00
9.	Haemoglobinometer	01	01	00
10.	Weight balance	01	01	00
11.	Digital weight balance	01	01	00
12.	Paraffin heat machine	01	01	00
13.	Gel electrophoresis	01	01	00
14.	Centrifuge	01	01	00
15.	Over-head projector	01	00	01
16.	projector	01	01	00
17.	Deep freeze	01	01	00
18.	Freeze	02	01	01
19.	Projector Stand	01	01	00
20.	Chymoghaph	01	01	00
21.	Haemocytometer	02	02	00
22.	Hot plate	02	02	00
23.	Micro-pipette/ Variable vol pipette	01	01	00
24.	Digital water and Soil Analysis kit	01	01	00
25.	Lovibond Comperator disc	01	00	01
26.	Hot Air Oven	01	00	01